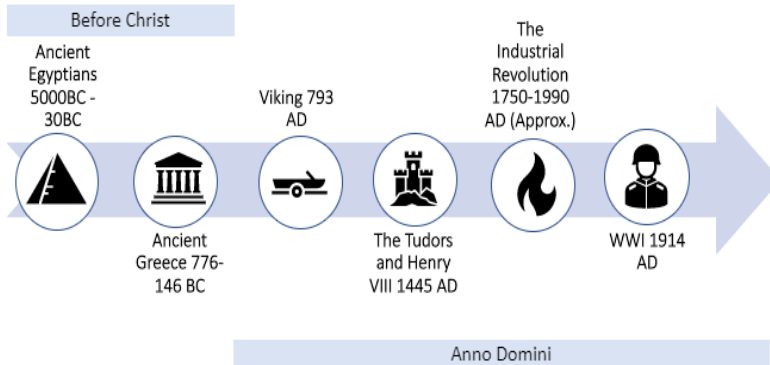
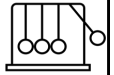


Year 5 - History - Summer Term

The Industrial Revolution 1750-1900 AD (Approx.)

Concept:

Cause and
consequence



What I already know

That technology now is very different to how it looked in the Victorian era.

I know about James Brindley and what canals are used for (Y1).

I know that stone age people created tools (Y3)

I know about Josiah Wedgwood and the pottery industry including the sorts of

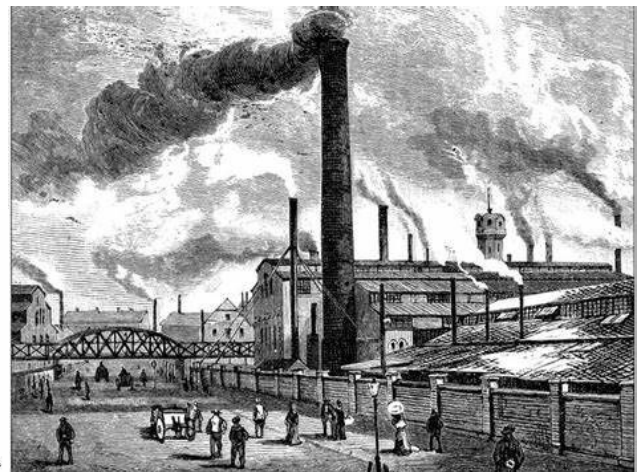
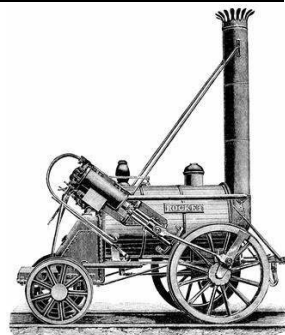
Essential Knowledge

- The Industrial Revolution, which took place between 1750 - 1900, was a period of great change in Britain.
- There were huge technological advances which had an impact on every aspect of life.
- In 1778, James Watt and Matthew Boulton invented a steam engine that could efficiently power factory machinery.
- Working conditions in factories and mines were poor and dangerous.
- Children worked in industries and mines.
- Living conditions were poor in cities and diseases spread quickly because of poor sanitation.
- 1829, George Stephenson design a locomotive—The

Vocabulary	Definition
Invention	Something new which is created, can be an object or an
Poverty	The lack of basic human needs such as clean water, nutrition, healthcare, education and shelter
Sanitation	Sanitation is the system that disposes of human
Industry	The process of making products by using machines
Mass Production	The production of many products in one go e.g. tex-

Essential Skills

- Use evidence to build up a picture of life in time studied including photos, pictures and statistics.
- Describe how different types of evidence tell us different things about the past and understand why con-



1778, James Watt and Matthew

1800s invention of the railway.

1819 The first Factories Act

In 1829, George Stephenson design a locomotive—The Rocket

1901 Factory Act banning children under 12 from working



Legacy